



# Learning Enrichment at Stanburn

---

## Trips Overview 2024-25

### Intent

We are passionate about providing our pupils with a range of enrichment opportunities to complement the work taking place within the classroom. Across the school year, pupils will attend a range of experiences both in school and out of school.

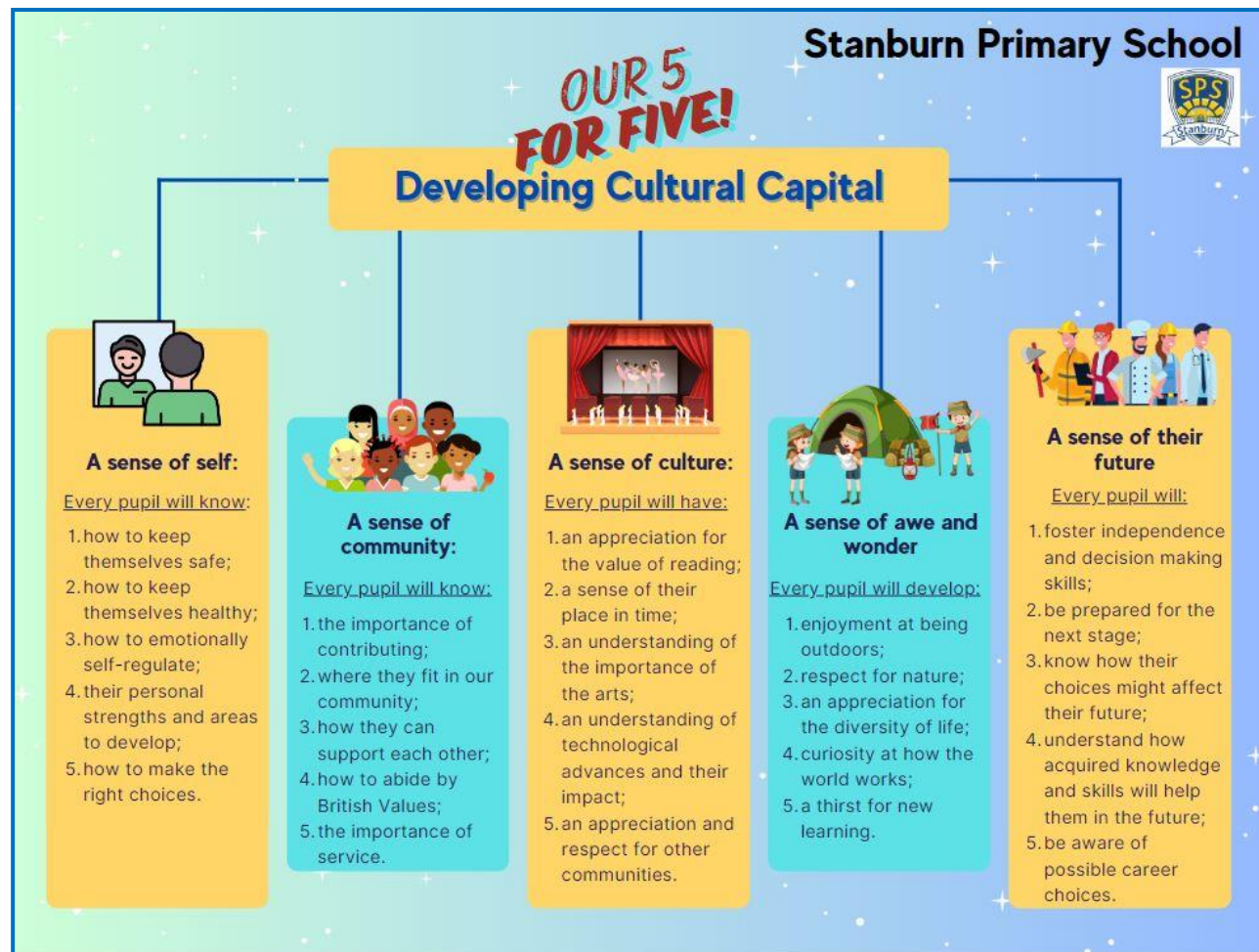
In order to keep the cost to parents as low as possible, where appropriate, trips which take place outside of school will make use of TfL's travel scheme and pupils will walk to trips which are within a 30 minute walking radius of the school. Each academic year there will be six enrichment opportunities for each year group:

- Outside of school, local; FREE (walking or using the TfL scheme)
- Outside of school, local; PAID (walking or using the TfL scheme)
- Outside of school, further afield; PAID (paid transport needed)
- In school PAID (e.g. a workshop in the hall)
- In school FREE (e.g. guest speaker or free workshop)
- In school PAID (e.g. outside company experience: Farm/Quidditch)





All learning enrichment opportunities at Stanburn Primary School link to one of our '5 for Five' Cultural Capital categories, which ensure every pupil at Stanburn develops into a well-rounded individual ready for the next stage.



	Autumn 1	Autumn 2	Spring 1	Spring 2	Summer 1	Summer 2	Cost
Whole School		<i>A sense of culture - 3</i>  <b>Wizard Theatre Whole School Pantomime</b>  £2 per child					<i>Estimate is based on approximate numbers/information available at the time of writing</i>

Reception	None Children settling in	<i>A sense of culture - 5</i>  <b>St John's Church</b> Understanding the World - People, Culture and Community  Free + active travel	<i>A sense of awe &amp; wonder - 1/2</i>  <b>Ark Farm</b> Understanding the World - The Natural World  £8 In school	<i>A sense of self - 2</i>  <b>Balance Bikes</b>  Physical Development - Gross and Fine Motor Skills  Price TBC In school	<i>A sense of community - 1</i>  <b>People who Help Us</b> <b>Visitors: Fire Brigade, Doctor, Optician</b> Understanding the World - People, Culture and Community  Free In school	<i>A sense of their future - 4</i>  <b>Bekonscot Model Village</b> PSED  £22 £12 + coach	<b>£30</b>
-----------	------------------------------	---	---	--	---	--	------------



	Autumn 1	Autumn 2	Spring 1	Spring 2	Summer 1	Summer 2	Cost
Year 1	<p><i>A sense of awe and wonder - 1</i></p> <p><b>Autumn Walk Local Area</b> Science - Seasonal Changes</p> <p>Free</p>	<p><i>A sense of awe and wonder - 1</i></p> <p><b>Winter Walk Local Area</b> Science - Seasonal Changes</p> <p>Free</p>	<p><i>A sense of community - 2</i></p> <p><b>Visit Local High Street</b> Geography - What is it like in my local area?</p> <p>Free</p>	<p><i>A sense of awe and wonder - 1</i></p> <p><b>Spring Walk Local Area</b> Science - Seasonal Changes</p> <p>Free</p>	<p><i>A sense of awe and wonder - 1</i></p> <p><b>Summer Walk Local Area</b> Science - Seasonal Changes</p> <p>Free</p>	<p><i>A sense of culture - 5</i></p> <p><b>Shree Swaminarayan Temple</b> RE - Hinduism</p> <p>Free + active travel</p>	£31
	<p><i>A sense of culture - 2</i></p> <p><b>Visit from Grandparents</b> History - Now and Then</p> <p>Free In classrooms</p>	<p><i>A sense of their future - 5</i></p>	<p><i>A sense of awe and wonder - 3</i></p> <p><b>Hertfordshire Zoo</b> Science - Animals including Humans (Animal Trackers Workshop)</p> <p>£24.00 £10 + coach</p>	<p><i>A sense of culture - 3</i></p> <p><b>Full of Surprises</b> Music - A project for pupils to explore the music of Haydn and the surprises we find in his symphonies</p> <p>Free In school</p>	<p><i>A sense of awe and wonder - 4/5</i></p> <p><b>Trip to the Natural History Museum</b> History - Mary Anning and the dinosaurs</p> <p>Free + TfL</p>	<p><i>A sense of culture - 1</i></p> <p><b>Paul Stickland Author Workshop</b> English - Narrative (writing stories) DT - Pop up story books</p> <p>Estimate £7 In school</p>	



	Autumn 1	Autumn 2	Spring 1	Spring 2	Summer 1	Summer 2	Cost
Year 2	<p><i>A sense of culture - 2/4/5</i></p> <p><b>Headstone Manor</b> History - Great Fire of London</p> <p>£13.90 £5 + coach</p>	<p><i>A sense of community - 2/3/4</i></p> <p><b>Belmont Synagogue</b> RE</p> <p>Free + active travel</p>	<p><i>A sense of self - 2</i></p> <p><b>Kiddy Cook - Is sugar bad for us?</b> DT - Balanced Diets</p> <p>£ TBC In school</p>	<p><i>A sense of culture - 3</i></p> <p><b>Junk Orchestra</b> Computing - Making Music; Music - Music in Nature</p> <p>£3.50 In school</p>	<p><i>A sense of awe and wonder - 4/5</i></p> <p><b>Look Out Discovery Centre</b> Nature Explorers Experience; Science - Plants</p> <p>£19 £10 + coach</p>	<p><i>A sense of awe and wonder -1/2</i></p> <p><b>Local Walk</b> Geography - Fieldwork Study</p> <p>Free</p>	£40
	<p><i>A sense of self - 2</i></p> <p><b>Hungry Caterpillar Healthy Foods</b> Science - Animals including Humans</p> <p>Free In school</p>						

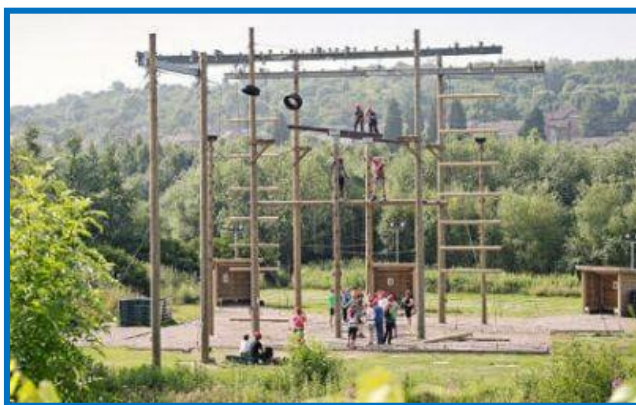


	Autumn 1	Autumn 2	Spring 1	Spring 2	Summer 1	Summer 2	Cost
Year 3	<p><i>A sense of culture - 2</i></p> <p><b>Stone Age to Iron Age Workshop</b> History</p> <p>£9 In school</p>	<p><i>A sense of awe and wonder - 4/5</i></p> <p><b>Natural History Museum</b> Geography - Earthquakes and Volcanoes; Science - Rocks</p> <p>£3 + TfL</p>	<p><i>A sense of culture - 5</i></p> <p><b>Trip to Sikh Brent Gurdwara</b> RE</p> <p>Free + TfL</p>	<p><i>A sense of self - 2</i></p> <p><b>The Hive - Barnet FC</b> PE - Football PSHE Healthy me</p> <p>Free + active travel</p>	<p><i>A sense of awe and wonder - 1/2</i></p> <p><b>Kew Gardens</b> Science - Plants Geography - Rainforests</p> <p>£18 £8 + coach</p>	<p><i>A sense of culture - 4</i></p> <p><b>Ancient Egypt Workshop</b> History- Ancient Egypt</p> <p>£9 In school</p>	<p><b>£49</b></p>



	Autumn 1	Autumn 2	Spring 1	Spring 2	Summer 1	Summer 2	Cost
Year 4	<i>A sense of culture - 2/5</i>  <b>Past Productions Greek Workshop</b> History – Ancient Greeks  £ 5.60 In school	<i>A sense of awe and wonder - 3</i>  <b>London Zoo</b> Science - Habitats and Food Chains  £7 + TfL	<i>A sense of culture - 5</i>  <b>St John's Church</b> RE  Free + active travel	<i>A sense of awe and wonder - 4/5</i>  <b>Science Museum</b> Science - States of Matter; Art - Light and Dark  £2.50 + TfL	<i>A sense of self - 2</i>  <b>Pizza Express</b> DT - Adapting a Recipe  Free + active travel	<i>A sense of awe and wonder - 5</i>  <b>Verulamium Museum</b> History - Romans  £10 £6 + coach	£25

Year 5	<i>A sense of awe and wonder - 2</i>  <b>Happy Chick Workshop</b> Science - Living things and their Habitats  £7 approx In school	<i>Sense of community - 2</i>  <b>Headstone Manor Museum</b> Geography  £5 + TfL	<i>A sense of awe and wonder - 4</i>  <b>Space VR</b> Science  £5 approx In school	<i>A sense of culture - 3</i>  <b>Tate Modern -</b> Art - Architecture  Free + TfL	<i>A sense of their future - 1/2/4</i>  <b>Residential/Non-residential</b> Kingswood  £200 approx	<i>A sense of self - 2</i>  <b>Pizza Express</b> DT - Developing a Recipe  Free + active travel	£17 <b>Trips</b>  £200 <b>Residential</b>
--------	---	---	--	---	--	--	---



	Autumn 1	Autumn 2	Spring 1	Spring 2	Summer 1	Summer 2	Cost
Year 6	<p><i>A sense of self - 1</i> <i>A sense of their future - 1</i></p> <p><b>TfL Workshop-</b> Staying safe using public transport</p> <p><b>FREE</b> In school</p>	<p><i>A sense of self - 5</i></p> <p><b>Choices</b> (Drug Awareness) PSHE Workshop</p> <p><b>FREE</b> In school</p>	<p><i>A sense of awe and wonder - 3</i></p> <p><b>Natural History Museum</b> Science - Evolution and Inheritance</p> <p><b>£3 + TfL</b></p> <p><i>A sense of culture - 3</i></p> <p><b>PWC West End Theatre</b> <b>Performance - The Little Mermaid</b></p> <p><b>Free + charity funded coach</b></p>	<p><i>A sense of culture - 5</i></p> <p><b>Trip to the Zoroastrian Centre, Harrow</b> RE</p> <p><b>FREE + TfL</b></p>	<p><i>A sense of community - 5</i></p> <p><b>Bentley Priory Visit</b> History - WW2</p> <p><b>£4 + TfL</b></p> <p><i>A sense of awe and wonder - 1</i></p> <p><b>Quidditch Workshop</b> English (SATs Celebration)</p> <p><b>£8</b> In school</p>	<p><i>A sense of awe and wonder - 1</i></p> <p><b>Residential/ Non-residential</b> Condover Hall</p> <p><b>£550/£40</b></p> <p><i>A sense of self - 1</i></p> <p><b>Met Police PSHE Gangs Workshop</b></p> <p><b>FREE</b> In school</p>	<p><b>£15 Trips</b></p> <p><b>£40 Non-residential</b></p> <p><b>£531 Residential</b></p>

